



APPLYING INNOVATIVE THINKING TO BETTER MEET OUR CUSTOMER'S NEEDS



A REINVENTION OF TEMPORARY SPACE



WHAT IS FLEX?

Building on our legacy of innovation, FLEX is a reinvention of temporary space.



DEFINING CHARACTERISTICS

When we explore the characteristics that differentiate Flex from any other product in the North American marketplace, we group them into three categories.



FLEXIBLE



MODERN



EFFICIENT



Flexible

FLEX is a panelized product adapted from our sister company in Europe that has been using this product for decades. We've taken that market proven concept and adapted a version specific for our North American customers.

Panels allow for limitless configurations both inside and out. Additionally, you can combine buildings to expand out or up, and you have a solution that works on just about any site, for any customer, in any sector.



Modern

Clean lines inside and out along with state-of-the-art fixtures, furniture, and options give Flex a modern look and feel – truly one of a kind in the North American marketplace.

Dressed up or down, Flex provides a safe, comfortable and productive environment for you, your workforce or your customers.



Efficient

LED lights, motion-detecting light switches and insulated double-paned windows are just a few of the modern components that make Flex energy-efficient and cost-effective.

When it comes to space and cost efficiencies, Flex allows you to design exactly the space you need in a smaller footprint.



ADDING VALUE

Not only do we provide the latest, and most significant, innovation in temporary space, but with one phone call to a WillScot expert, we can provide everything else needed to be productive the moment the unit is delivered.

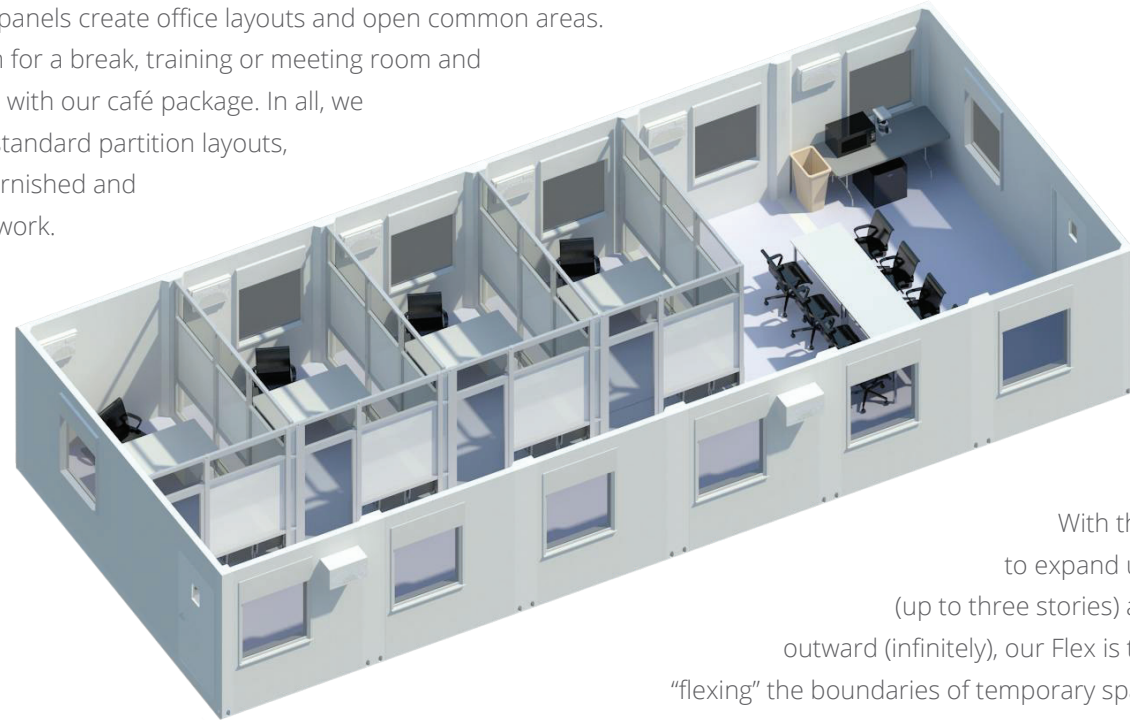
This ease of doing business is unique to this industry, and to us it is second nature. We make sure the solution is right so that productivity is all that you see.

We like to say that our people and solutions are Ready to Work so that from day one, our customers are ready to work.



INTERIOR PARTITION PANELS CREATE INFINITE POSSIBILITIES

Partition panels create office layouts and open common areas. Use them for a break, training or meeting room and complete with our café package. In all, we offer 12 standard partition layouts, all fully furnished and ready to work.



With the ability to expand upward (up to three stories) and outward (infinitely), our Flex is truly "flexing" the boundaries of temporary space.



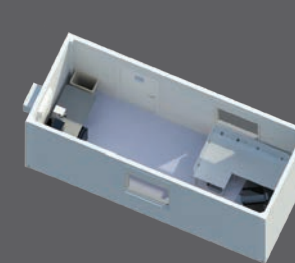
Standard Layouts



20' x 32'



20' x 24'



20' x 8'



40' x 8'



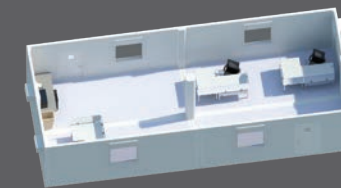
20' x 16'



20' x 40'



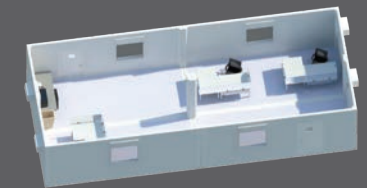
20' x 48'



40' x 16'



20' x 16'
(2 Story)



40' x 16'
(2 Story)

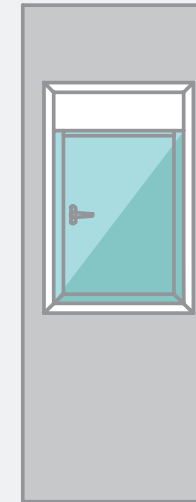


Simply put, FLEX is the ideal solution to any relocatable space need.

WINDOW OPTIONS

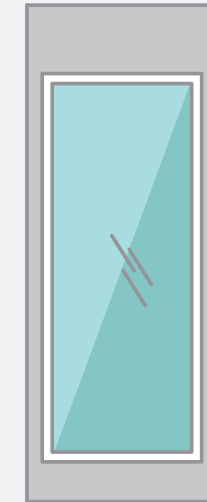


The Standard Window



- 2/6 x 4/0 (972 or 1113 Panel) & 2/2 x 4/0 (832 Panel).
- Double-paned glass is energy efficient and decreases exterior noise.
- Comes standard with a shade/blind for privacy and to control light.
- Tilt and turn functionality allows better visibility (by eliminating visual obstructions) and provides multiple settings for ease of use and cleaning.
- Traditional two-piece, vertical design – offered only in Florida – provides the same efficiency, decreased noise levels, and ease of use.

The Large-Format Window



- 2/6 x 6/6 (972 or 1113 Panel).
- Unobstructed, full panel provides unmatched visibility.
- Double-paned glass is energy efficient and decreases exterior noise.
- Comes standard with a blind for privacy and to control light.
- The large format is unique to our industry; it further differentiates the Flex product from traditional modular products.
- Creates a premium experience for both those working within or visiting the space.
- The large-format window is ideal for event space, sales centers (automotive, real estate), education or additional office space, to name a few.



Spending time in naturally lit environments keeps your energy level more stable throughout the day. Research has shown it improves your focus, which results in increased productivity. Light simply brightens our overall outlook on life, and that has a positive impact on everything we do.



In keeping with the modern, customizable nature of Flex, we offer two windows to let the light shine in. The windows can be used in any combination or configuration to create a space unique to the customer's need. These options further differentiate Flex from any other product in the marketplace.



INTERIOR WALL OPTIONS

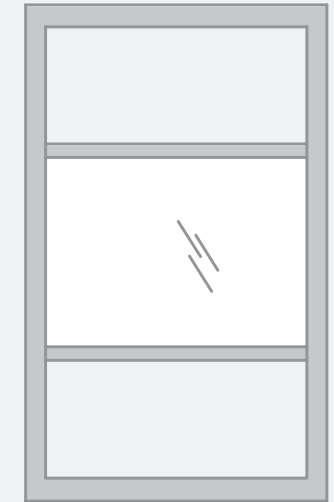


The Steel Panel



- Modern aesthetic
- Insulated panels create proper sound dampening
- Rolled steel walls allow for hanging with magnets
- Allows you to create spaces in multiple sizes

The Glass Panel



- Modern aesthetic
- Insulated glass provides proper sound dampening
- Glass allows for the transfer of natural light
- Frosted panel can be used as a dry-erase board
- Allows you to create spaces in multiple sizes

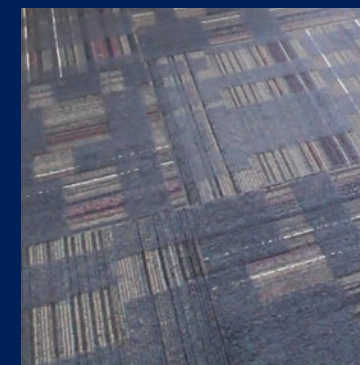


Members of your team who work in human resources, legal, or finance or who discuss sensitive information generally need more privacy on a daily basis as well. With Flex Panels, you can achieve the right balance between shared work areas and individual quiet zones.



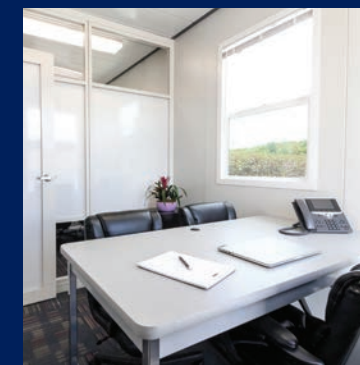
The Flex Panels are the perfect complement to the modern look of our panelized product. We offer two choices so your configuration is completely tailored to your needs. The solid panel offers the most privacy, while the frosted panel is a more upscale option that will allow more light into that separate room. Either way, these panels give you the power to customize your workspace.

Additional Options



Interior Carpet

Dampens noise, creates a more comfortable environment.



Furniture

Full selection of furniture and furnishings to outfit the space.



Steps & Ramps

Code-compliant OSHA steps / ADA steps and ramps

READY TO WORK

At WillScot, we are focused on doing one thing very well – making it easy for you to get the temporary space and storage you need, configured exactly to your specifications, delivered and set up so you're ready to work from day one.

Everything about our company and culture is geared toward providing this value – now more than ever. In 2020 we merged with portable storage leader Mobile Mini, allowing us to serve the total site like no one else can. We have the largest fleet of quality mobile offices and portable storage units, the full array of add-on options to outfit your unit inside and out, the largest network in North America and the most capable team of experts in the industry. All of these assets stand ready to serve your needs – any time, any place.

It all goes back to doing that one thing very well. We focus on what we do best, so you can focus on what you do best – working your project, being productive, staying safe and meeting your goals.



800.782.1500 | [WILLSCOT.COM](https://www.willscot.com)

WILLSCOT, INC. CORPORATE HEADQUARTERS
901 S Bond Street Suite 600 • Baltimore, MD • 21231

